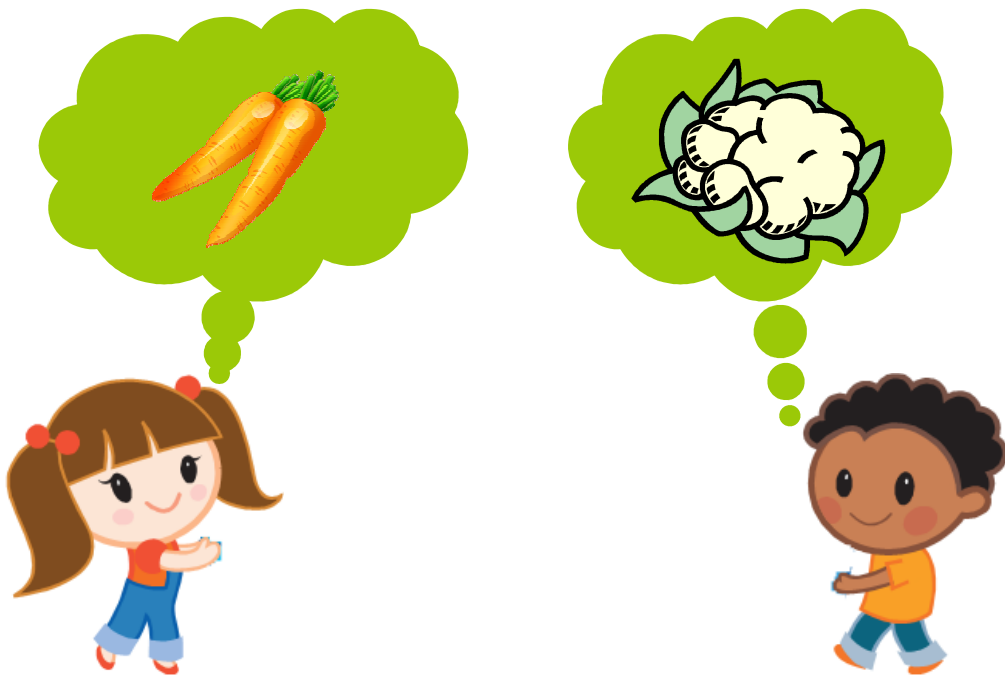


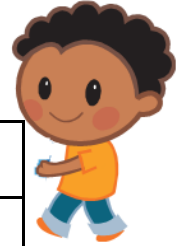
# Parts of a Plant

(Roots, Stem, Leaf, Flower, Fruit & Seed)

Worksheets for Grade 3



## Table of Contents of Complete Version



<b>Topic</b>	<b>Page</b>
Parts of a Plant	3
Parts of a Plant - Functions	4
Tap Root & Fibrous Roots	5
Functions of Roots	6
Types of Stems	7
Types of Stems - Define	8
Classification of Plants	9
Functions of Stems	10
Roots and Stems	11
Leaf	12
Functions of a Leaf	13
Buds, Flowers and Fruits	14
Seed	15
Plant Parts We Eat	16
Correct the Sentences	17
Give an Example	18
Why ?	19
Answer Keys	20-35

### Tap Root & Fibrous Root



**A**



**B**

Which type of roots do you see in the diagrams above ?

A \_\_\_\_\_ B \_\_\_\_\_.

Fill the table below:

	Tap Root	Fibrous Root
Similarity		
Difference		
Example		

Circle the plants with tap roots in **red** and the ones with fibrous roots in **green**.

- |        |      |          |       |       |       |
|--------|------|----------|-------|-------|-------|
| tomato | rice | hibiscus | wheat | grass | corn  |
| bean   | pea  | carrot   | oak   | palm  | mango |

Name \_\_\_\_\_ Date \_\_\_\_\_

### Buds, Flowers and Fruits

Name the parts of the apple plant shown below and in the square boxes number the sequence of the pictures.

Why do flowers usually have beautiful colors , nectar and fragrance?

---

---

---

What is the main function of a flower ?

---

Why are fruits usually fleshy ?

---

---

Name a fruit with all its seeds on the outside : \_\_\_\_\_

Part of the plant which helps in reproduction : \_\_\_\_\_

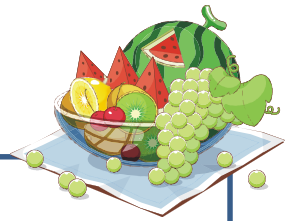
Circle the fruits with single seeds in **red** and the ones with several seeds in **green**.

- |        |        |        |             |             |            |
|--------|--------|--------|-------------|-------------|------------|
| cherry | apple  | mango  | peach       | water melon | plum       |
| orange | banana | chilly | pomegranate |             | strawberry |
| kiwi   | pear   | lemon  | guava       | pineapple   | fig        |

Name \_\_\_\_\_ Date \_\_\_\_\_

### Give an Example

Give an example for each.



A storage root.

\_\_\_\_\_

An underground stem.

\_\_\_\_\_

An aquatic plant.

\_\_\_\_\_

A plant that eats insects.

\_\_\_\_\_

A seed that we eat.

\_\_\_\_\_

A plant with tendrils.

\_\_\_\_\_

A plant that can be used to make a garden bush.

\_\_\_\_\_

A tree with fibrous roots.

\_\_\_\_\_

A herb with tap root.

\_\_\_\_\_

A plant that can reproduce without seeds.

\_\_\_\_\_

A fruit with a single seed.

\_\_\_\_\_

A fruit with many seeds.

\_\_\_\_\_

An edible leaf.

\_\_\_\_\_

An edible flower.

\_\_\_\_\_

Creeper with a huge fruit .

\_\_\_\_\_